

Power Paragliding Meter

Your Powered paragliding meter gives you basic information about your paramotor for a calm and satisfying flight.

After switch on PPG meter The display shall say Hallo and inform you about time remaining to your next service.

Display 1. shows two temperatures (from the 2 sensors fitted, CHT & Air are standard) , engine RPM and current engine operating time, which is automatically reset by switching off and on your PPG meter.

Display 2. shows Two engine timers which you can reset whenever you want.

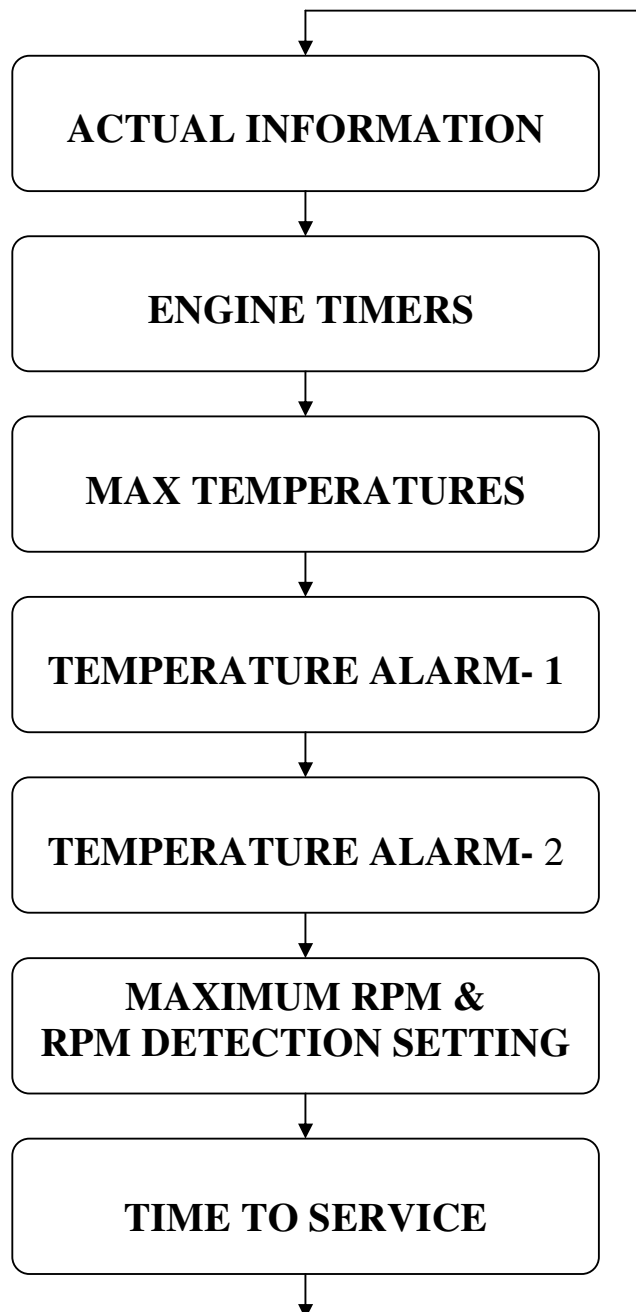
Display 3, shows Two max. temperatures which you can reset whenever you want.

Display 4. shows the setting for the temperature alarm No 1. When you set the value 300°C the alarm will be off.

Display 5, shows the setting for the temperature alarm No 2. When you set the value 300°C the alarm will be off.

Display 6. shows Maximum RPM reached that you can reset whenever you want and the setting for RPM detection (one turn of engine = two ignition pulse). Yes / No.

Display 7. shows a countdown timer to your next service, That you can change whenever you want.





Controlling your PPG Meter:

- long push of the control button (3 sec) :enters to edit and save setting.
- short push of the control button : changes-over individual display and changes numerical value.

By pressing the control button for a second you can move through the following displays;

Display no. 1 – In Flight Display

On the in flight display you have two temperatures, the engine rpm and engine timer which is automatically reset by switching-off and on again on the PPG meter.

The temperature range of the meter is from minus 40 °C to plus 299 °C. If you have a Temperature sensor connected you will see the actual temperature displayed. If a sensor is not connected then you will see a display value of 299 °C to indicate a sensor is disconnected.

If you have a Temperature alarm set it will be activated in this case (sensor disconnected) You can cut this alarm off by setting the alarm value to 300 °C in display no. 4 or 5.

The RPM meter displays actual RPM of you engine.

The engine timer on this display records the time the engine is running. When the engine is turned off the timer stops and then restarts when the engine is restarted giving you the overall engine run time. Only when the PPG meter is turned off will this reset to zero.

Display no. 2 – flight engine timers

On this display there are two engine timers which you can reset whenever you want. These timers record the time the engine is running and stays saved after you switch off the PPG Meter. You can keep recording the hour meter for as long as you like

Reseting of flight engine timer at display no. 2 :

- While on Display page 2 you can enter the editing mode by a long push on control button, about 3 sec. In edit mode the display will blink.
- By a short push on control button you can choose the first or second line to be edited.
- By a long push on control button you can reset the timer to zero.

Display no. 3 – max. temperatures

On this display are two maximum temperatures which you can reset whenever you want.

Resetting of maximum temperatures at display no. 3 :

- While on Display page 3 you can enter the editing mode by a long push on control button, about 3 sec. In edit mode the display will blink.
- By a short push on control button you can choose the first or second line to be edited.
- By a long push on control button you can reset the Maximum temperature to zero.

Display no. 4 – temperature alarm 1

On Display 4 you will see the Setting of alarm for temperature no 1. When the temperature exceeds this value the alarm will sound. When you set the value to 300°C the alarm will be off.

Setting of temperature alarm No1 at display No. 4 :

- While on Display page 4 you can enter the editing mode by a long push on control button, about 3 sec. In edit mode the display will blink.
- By a short push on control button you can change the temperature value for alarm no 1.
- By a long push on control button you will save the new alarm setting.

Display no. 5 – temperature alarm 2

On Display 5 you will see the Setting of alarm for temperature no 2. When the temperature exceeds this value the alarm will sound. When you set the value to 300°C the alarm will be off.

Setting of temperature alarm No 2 at display No. 5 :

- While on Display page 5 you can enter the editing mode by a long push on control button, about 3 sec. In edit mode the display will blink.
- By a short push on control button you can change the temperature value for alarm no 1.
- By a long push on control button you will save the new alarm setting.

Display no. 6 – max RPM and how to set of detection Mode for RPM meter

Display 6 shows the Maximum RPM reached that can be reset whenever you want and also shows RPM Detection Method. RPM is set by selecting Yes or No to the question of does one turn of engine = two ignition pulse by answering Yes or answer No to select one turn of engine = one ignition pulse.

Some engines have ignitions with two ignition pulse in one turn of engine. When you use the PPG meter set to the one ignition pulse per turn the RPM meter will display a double value.

Setting of maximum RPM and the detection setting for the RPM:

- While on Display page 6 you can enter the editing mode by a long push on control button, about 3 sec. In edit mode the display will blink.
- By a short push on control button you can select the RPM maximum or the detection method setting.
- By a long push on control button on the RPM Maximum it will be reset to zero or on the detection method switched between the Yes and No settings.

Display no. 7 –Service Countdown Timer.

Display 7 allows you to set a countdown timer to your next service, that you can reset whenever you want. When you set for example the value to 50 hours, you will see after operating your engine the time remaining to zero. This value does not reset when the PPG meter is switched on and off.

Setting service countdown timer for display no. 7 :

- While on Display page 7 you can enter the editing mode by a long push on control button, about 3 sec. In edit mode the display will blink.
- By a short push on control button you can change hour value for countdown timer.
- By a long push on control button you will save the new setting.

Technical Information and how to mount your PPG Meter.

Operating Power supply : 7-22V

The PPG Meter is designed for electric start version of paramotors, but can be operated on a 7 volt battery supply for pull start paramotors.

Wiring, the long red wire is Positive (+ battery) and long black wire Negative (- battery). You can use for example the charging connector on your paramotor.

For correct operation the PPG Meter must be have the negative connection or black wire (- battery) connected to the frame. You can wire your PPG meter to turn on with your paramotor electric starter or if using a external battery for a pull start such as a 7 volt battery you will need to connect the battery's positive terminal to the red wire and the battery's negative side also to the frame to turn on the PPG meter we recommend you add a switch to the red wire to turn the PPG meter on and off.

Temperature sensors : - 40 to 299°C :

The PPG Meter has two temperature sensors :

- CHT sensor – sensors of the spark plug
- Air sensor – outside temperature

You can choose which temperature sensor output is displayed first on you screne by changing the input plugs.

Tachometer Wire:

You must turn the RPM sensor cable about 2-3 turn onto the spark plug lead. This wire is necessary for reading the engines RPM on the PPG Meter and activates the engine timers.

It is important that all loose wires are secured with wire ties to stop any chance of propeller strike on the cables.

